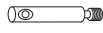


assembly instructions 09/2021

TOOLS:

Allen key SW4 and SW5 (enclosed), crosstip screwdriver

12x XS steel bolts



2x countersunk screws (5x60)



12x connector housings



2x countersunk screws (5x80)



12x grub screws



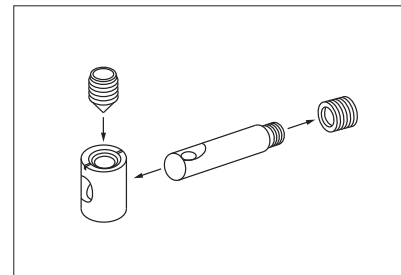
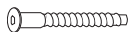
2x center feet (13/17 cm), adjustable

1x countersunk bolt (M8x50)



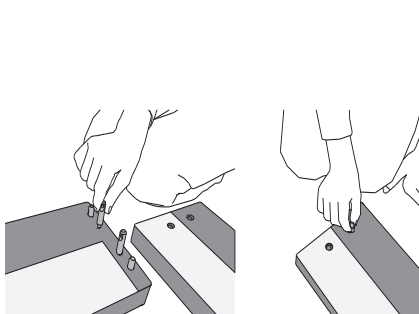
2x spacer blocks

24x confirmat screws

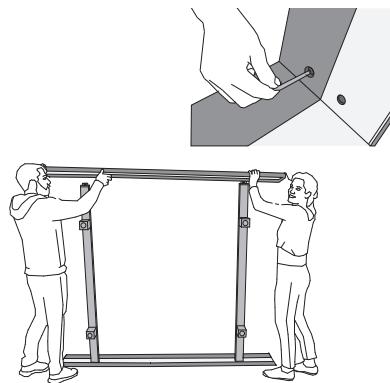


Video:
<https://www.youtube.com/watch?v=ioLUTDqtvgE>

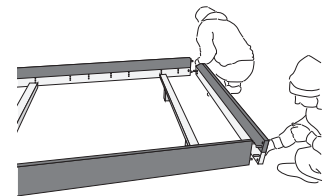
Please assemble the bed **on a soft surface (e.g. a carpet or blanket)** to avoid damages.



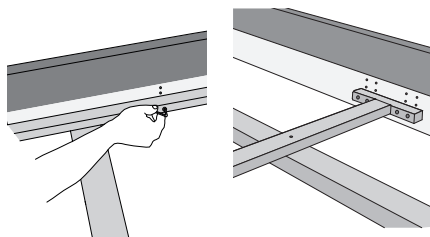
1. Insert connector housings and screw steel bolts into side rails, crossbars, head and footboards. Align bolts and housings correctly!



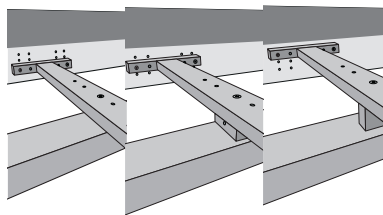
2. Mount the bed feet to the crossbar. Attach the crossbars to one of the side rails. Fix the connection with grub screws. Mount the second side rail the same way.



3. Fix head and footboards.

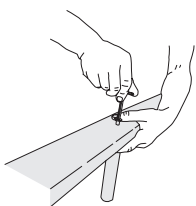


4. Choose a position for the mattress supports. Fix the side supports and the center rail using confirmat screws.

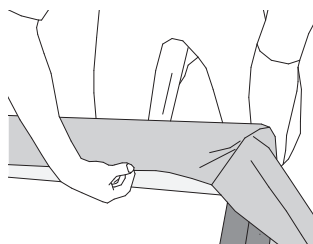


5. Use the countersunk screws in the correct length (5x60/80) to fix the spacer block.

without spacer block: insertion depth 14,5 cm
horizontal spacer block: insertion depth 12,5 cm
vertical spacer block: insertion depth 10,5 cm



6. Choose the correct center feet and connect it to the center rail with the countersunk screw (M8x50).



7. Place the cover at one corner and fix it with the hook-and-loop fastener. Afterwards place the cover around the whole bed frame and fix it with the hook-and-loop-fastener from the corners to the middle of the bed.

