

# MELLOW DAYBED

## ZEITRAUM

### assembly instructions 03/2021

#### TOOLS:

allen key SW4 and SW5 (enclosed)

12 x XS steel bolts



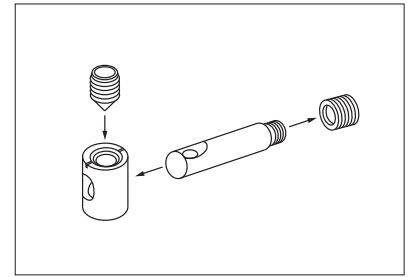
12 x connector housings



12 x grub screws

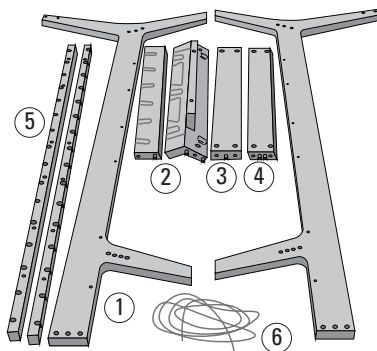


12 x confirmat screws (5x50)



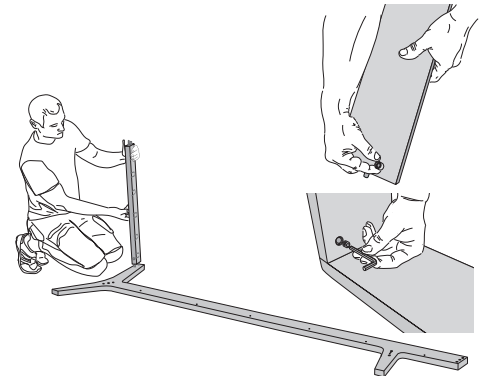
Watch this video for further information on the metal fitting:  
<https://www.youtube.com/watch?v=ioiUTDqtvvE>

Please assemble the bed **on a soft surface (e.g. a carpet or blanket)** to avoid damages.

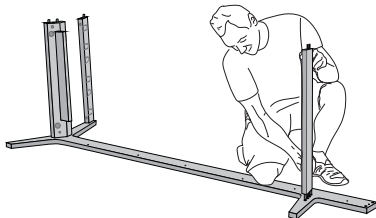


1 side rails  
2 headboard  
3 footboard

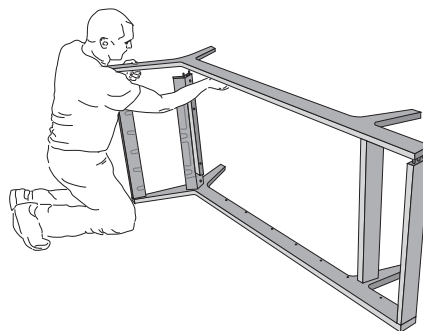
4 cross bar  
5 support bars  
6 leather cord



1. Screw steel bolts into the side rails (1). Insert connector housings into headboard (2), footboard (3) and cross bar (4). Ensure that bolts and housings are aligned correctly. Place the bars of the headboard (2) on one of the side rails (1) and fix the connectors using the allen key.



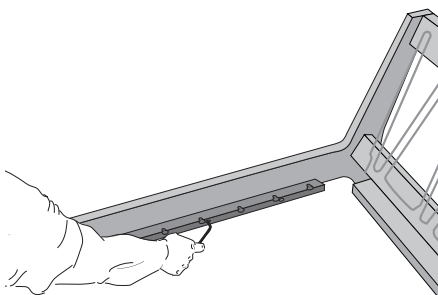
2. Attach the cross bar (4) to the side rail (1).



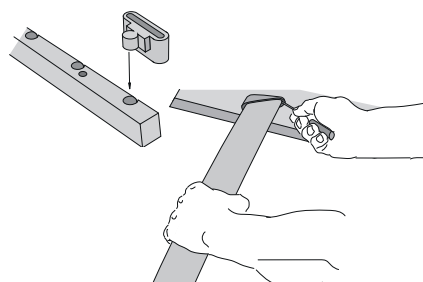
3. Attach the footboard (3) to the side rail (1). Place the second side rail on top of the parts that are already assembled.



4. Thread the leather cord through the slots in the headboard (2). Before fixing it, tighten the cord slightly.



5. Attach the support bars (5) to side rails (1) using confirmat screws.



6. Insert the rubber caps into the holes in the mattress supports and fit the sprung slats into the rubber caps.

