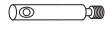


assembly instructions 07/2021

TOOLS:

allen key SW 4, SW 5 (enclosed)
screwdriver size 2

8 x XS bolts



2 x countersunk screws (M8x50)

8 x connector housings



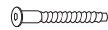
1 x distance block

8 x grub screws



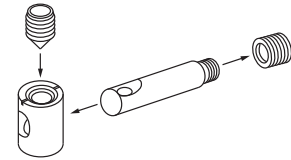
2 x screws (5x60)

25 x confirmat screws 5x70



2 x screws (5x80)

4 x adjustable centre feet (13/17 cm)



Video:
<http://www.scheulenburg-direkt.de/index.php?page=content&colID=11>

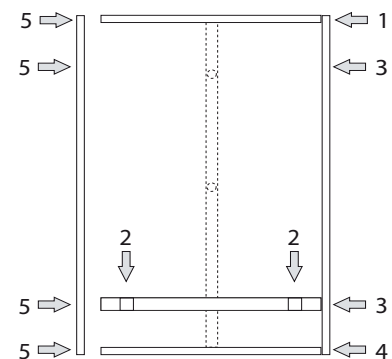
Prior to assembly insert the connector housings into headboard, crossbar and footboard with the slot in the direction of the XS bolts. Insert and turn XS bolts accordingly into sides.

ASSEMBLY OF THE BEDFRAME

The assembly will be easier if the bed is joined together lying on its side.

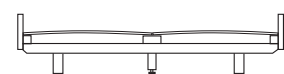
1. Connect and fix the headboard part onto the first side rail.
2. Mount the feet to the crossbar.
3. Connect the crossbar to the side rail.
4. Connect and fix footboard to the side rail.
5. Fit the second side rail to the crossbar, head and footboard.

To fix the connectors please use grub screws. If you cannot screw in the grub screw flushly unscrew the XS bolts slightly. Then connect again. Fix right angles of the completely assembled bed and make sure to tighten all connections once more.

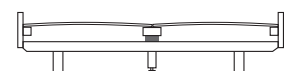


SUPPORTS FOR SLATTED BASE

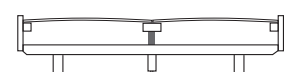
Please note that the supports can be fixed at three different heights. Use the confirmat screws to fix the supports to the side elements. We recommend that the mattress protrudes by 2 inches above the side rails. For mattresses wider than 140 cm the middle support must be used. If necessary use the distance block and the screws for the right height. For position 2 place the distance block horizontally, for position 3 rotate the distance block upright. Afterwards mount the height-adjustable centre feet.



Position 1: without distance block



Position 2: distance block horizontal



Position 3: distance block vertical

