

Assembly instructions 07/2022

TOOLS:

Allen key SW5 (enclosed)

8x XS bolts



8x connector housings



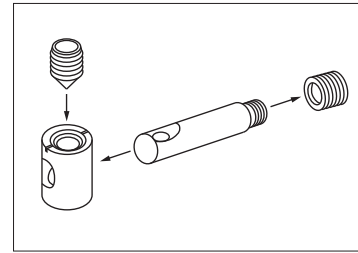
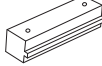
8x grub screws



16x/24x flat head screws

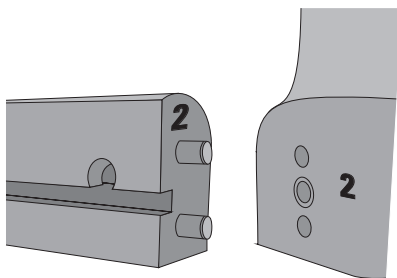


8x/12x blocks

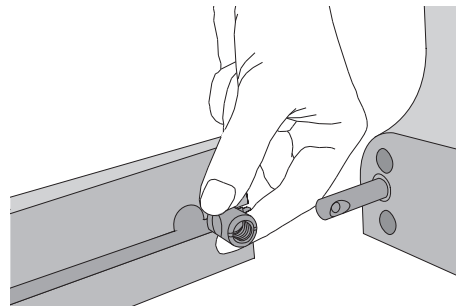


Video:
<http://www.scheulenburg-direkt.de/index.php?page=content&colID=11>

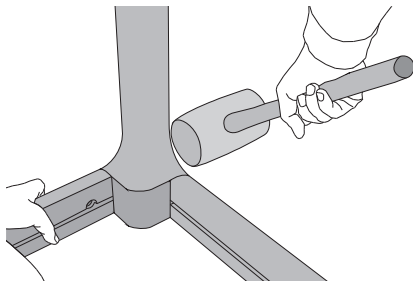
Please assemble the table **on a soft surface (e.g. a carpet or blanket)** to avoid damages.



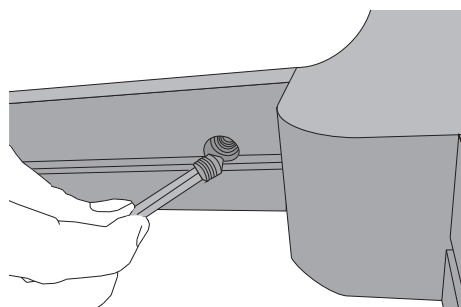
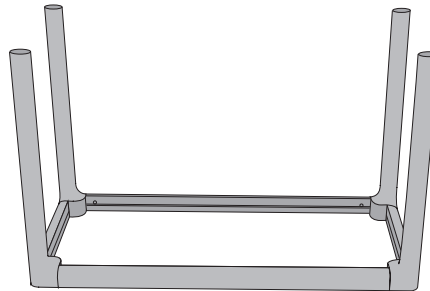
1. Assemble frame rails and legs **according to the numbers**.



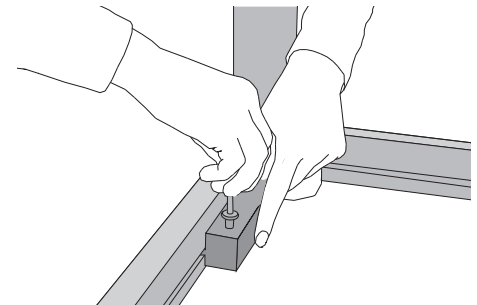
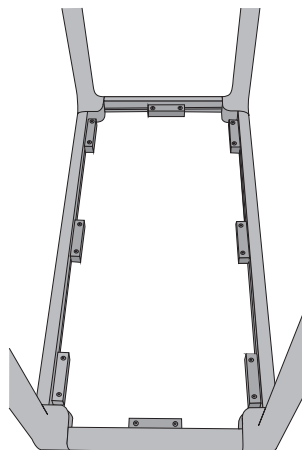
2. Screw the XS bolts into the legs (do not overtighten!) and insert the connector housings into the frame rails. When aligning the housings, ensure that the slots point towards the intersecting holes.



3. Gently knock the legs onto the frame rails.



4. Secure the connectors using grub screws. If you cannot tighten the connection, loosen the grub screw and unscrew the bolt by one or two turns. Then connect again.



5. Place the frame on the bottom side of the tabletop. Slide the mounting blocks into the frame and fix them with flat head screws.